



**Lexar® JumpDrive™  
SAFE S3000 FIPS**

User Guide

---

# Contents

## Preface

Who Should Read This User Guide ..... v

## Chapter 1 Overview..... 1

JumpDrive SAFE S3000 FIPS Features ..... 1

## Chapter 2 Getting Started ..... 2

Operating Systems ..... 2

Pre-requisites ..... 2

AutoPlay ..... 2

Using your JumpDrive SAFE S3000 FIPS for the First Time ..... 4

Logging On to your JumpDrive SAFE S3000 FIPS ..... 9

## Chapter 3 Using Your JumpDrive ..... 11

How to Safely Unplug the JumpDrive SAFE S3000 FIPS from your PC ..... 11

How to Change a Passphrase ..... 12

How to Unblock your JumpDrive SAFE S3000 FIPS ..... 13

    Security Question Set ..... 13

    Question Not Yet Set ..... 14

How to Change Your Device Name ..... 15

How to Lock/Unlock the SAFE Drive ..... 15

How to Find a Serial Number ..... 16

How to Display the End User License ..... 16

## Chapter 4 Specifications..... 17

## Chapter 5 Contact Information..... 18

## List of Figures

Figure 1 - AutoPlay Settings in Windows Vista.....	3
Figure 2 - Virtual Drives Mounted at First Insertion of Device .....	4
Figure 3 - Select Language Window .....	5
Figure 4 - Name Device Window .....	5
Figure 5 - Create Passphrase Window .....	6
Figure 6 - Passphrase Created Successfully Window .....	6
Figure 7 - Enter Passphrase Window.....	7
Figure 8 - Virtual Drives After Correct Passphrase Presentation .....	7
Figure 9 - Self Management Window .....	8
Figure 10 - Select Security Question.....	8
Figure 11 - Self Management Completed Window .....	9
Figure 12 - Viewing Files in Explorer.....	10
Figure 13 - Safe to Remove Device Window.....	11
Figure 14 - Change Settings Window .....	12
Figure 15 - Change Passphrase Window .....	12
Figure 16 - Passphrase Changed Window .....	13
Figure 17 - Unblock Device Window.....	13
Figure 18 - Device Reset Window (Question Not Yet Chosen) .....	14
Figure 19 - Reinsert Device Window.....	14
Figure 20 - Enter Passphrase Window.....	15
Figure 21 - The "About" Window .....	16

---

## Preface

The JumpDrive SAFE S3000 FIPS is an advanced USB flash drive that integrates hardware encryption, a rugged waterproof metal housing, and a tamper-proof smart card to provide a highly secure storage solution for your data. The JumpDrive SAFE S3000 FIPS offers unsurpassed data protection when data is at rest and stored securely, as well as in transit, as it is transferred securely from one computer to another.

The device is designed for users in both personal and corporate computing environments.

### Who should read this user guide?

This guide is written for the end-user. It provides an overview of the main features and describes the main tasks. Users should be familiar with mass storage devices and how to remove them safely.

# Overview

Congratulations on your purchase of the JumpDrive SAFE S3000 FIPS product.

This USB flash drive combines a smart card chip with flash memory and application software.

The product provides 2, 4, or 8GB in passphrase protected storage capacity.

---

**Warning:** The JumpDrive SAFE S3000 FIPS is a mass storage device. Consequently, you should not just unplug it from your PC. Doing so could result in the loss of your data. We strongly recommend that you use the "safely remove device" feature to remove the JumpDrive. For details, refer to "How to Safely Unplug the JumpDrive SAFE S3000 FIPS from Your PC" on page 11 of this guide.

---

## JumpDrive SAFE S3000 FIPS Features

The JumpDrive SAFE S3000 FIPS is suitable for anyone who wants to ensure that his/her data is protected at all times.

**The JumpDrive SAFE S3000 FIPS offers the following features:**

- The world's first smart card-based secure USB flash drive that is FIPS 140-2 Level 3 validated.
- Flash memory-based data storage with hardware AES 256-bit encryption. All user stored data on the JumpDrive is encrypted and passphrase protected
- Plug and Play on supported operating systems. The JumpDrive does not require any additional drivers to be installed.
- A rugged and waterproof metal housing that protects against physical damage
- A tamper-proof Gemalto .NET V2.2 FIPS smart card to enforce strong authentication for device access, and to manage all security-critical computations like key generation and storage.

# Getting Started

## Operating Systems


The JumpDrive SAFE S3000 FIPS is compatible with the following operating systems:

- Windows 2000 (up to Service Pack 4)
- Windows XP (up to Service Pack 2)
- Windows Server 2003, 2008
- Windows Vista (up to Service Pack 1)

## Pre-requisites

### AutoPlay

To start the login application automatically when you insert the JumpDrive, AutoPlay must be enabled for removable devices. Follow the instructions below if autorun is not enabled on your computer:

- In Windows 2000, the AutoPlay feature is not supported. Please start the login application manually by double-clicking the file "JumpDriveS3000\_PC.exe". This file is on the **JumpDrive** drive and is indicated by this icon  in Explorer.
- In Windows XP, Server 2003 and 2008, you must configure the registry settings for **Autorun**, **NoDriveAutoRun** and **NoDriveTypeAutoRun** registry keys. For instructions, please refer to:
  - The Microsoft Tool TweakUI download from the following link:  
<http://www.microsoft.com/windowsxp/downloads/powertoys/xppowertoys.msp>

---

**Note:** This tool does not support Windows 2000.

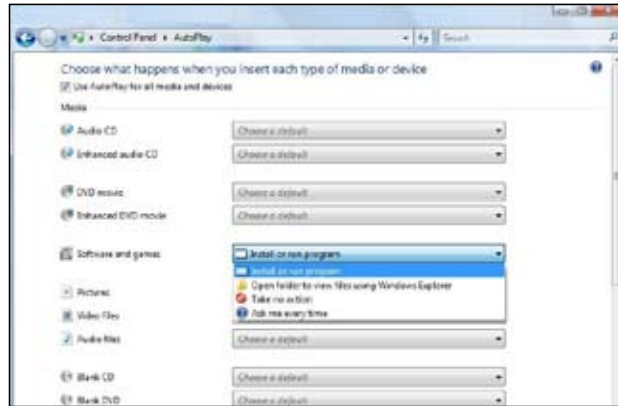
---

- Or follow the instructions in Microsoft TechNet located at the following link:  
<http://www.microsoft.com/technet/prodtechnol/windows2000serv/reskit/regentry/93502.msp?mfr=true>
- In Windows Vista, do the following:

## To enable the AutoPlay setting in Windows Vista:

1. From **Start**, choose **Control Panel > AutoPlay**. The AutoPlay settings window as shown in "Figure 1" appears.

Figure 1 - AutoPlay Settings in Windows Vista



2. If **Use AutoPlay for all media and devices** is not already selected, please select it.
3. Under **Software and games**, select one of the following options:
  - **Install or run program** — to enable autorun of the login application.
  - **Ask me every time** — to disable autorun of the login application.



## Using your JumpDrive SAFE S3000 FIPS for the First Time

The first time you use your JumpDrive SAFE S3000 FIPS, you must set the following parameters:

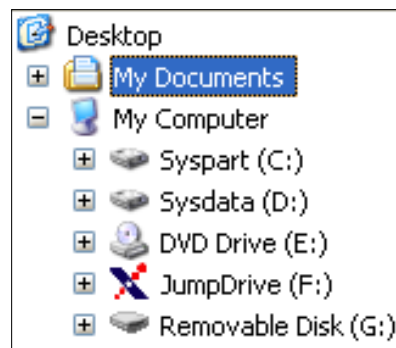
- The display language
- The device name
- The passphrase to unlock and access your SAFE storage area.

At subsequent use of your JumpDrive SAFE S3000 FIPS, you will only need to enter your passphrase. This is true even if you use your JumpDrive on a different PC.

### To set the initial parameters:

1. Insert your JumpDrive SAFE S3000 FIPS to the USB port of your PC. Several things happen:
  - Two drives appear in the operating system (you can see them in Windows Explorer, see Figure 2). The drive labeled **JumpDrive** stores the device's system files. The drive labeled **Removable Disk** **Removable Disk (G:)** stores your data. It displays as  **SAFE (G:)** when it is locked and as  **SAFE (G:)** when it is unlocked.

**Figure 2 - Drives Mounted at First Insertion of Device**




- The “locked” icon  appears in the system tray.
- The **Select Language** window appears, as shown in “Figure 3”.

Figure 3 - Select Language Window



2. Under **Please select your language**, choose the language you want to use from the list and click **Continue**. The window shown in "Figure 4" appears.

Figure 4 - Name Device Window



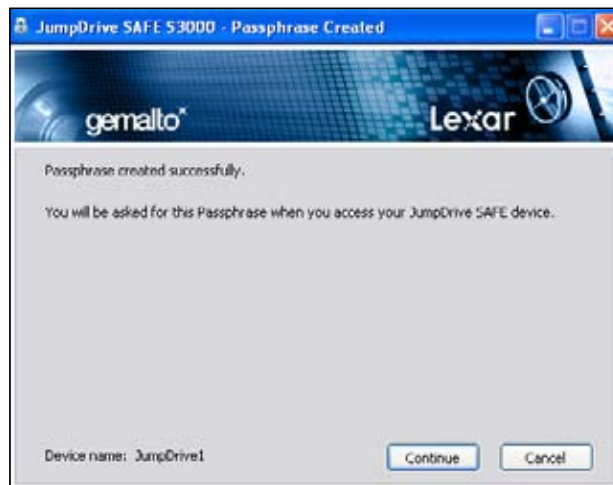
3. Enter a name for your JumpDrive and click **Continue**. The window shown in "Figure 5" appears.

Figure 5 - Create Passphrase Window



4. Under **Passphrase** and **Confirm Passphrase**, enter the passphrase.
5. Click **Continue**. The window in "Figure 6" appears.

Figure 6 - Passphrase Created Successfully Window



6. Click **Continue**. The window shown in "Figure 7" appears.

Figure 7 - Enter Passphrase Window



7. Under **Passphrase**, enter the passphrase that you created in the previous window and click **Continue**.



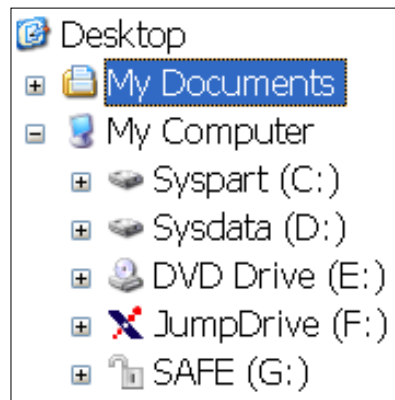
The secure storage area is now unlocked and the drive changes from  Removable Disk (G:) to  SAFE (G:), as shown in "Figure 8".

Figure 8 - Drives After Correct Passphrase Presentation



After entering the passphrase, the window shown in "Figure 9" appears:

**Figure 9 - Self Management Window**



8. When this happens, perform one of the following actions:

- Click **Ask me later**. In this case, the initial JumpDrive setup is completed. Note that each time you plug-in the JumpDrive you will be prompted to select a security question.

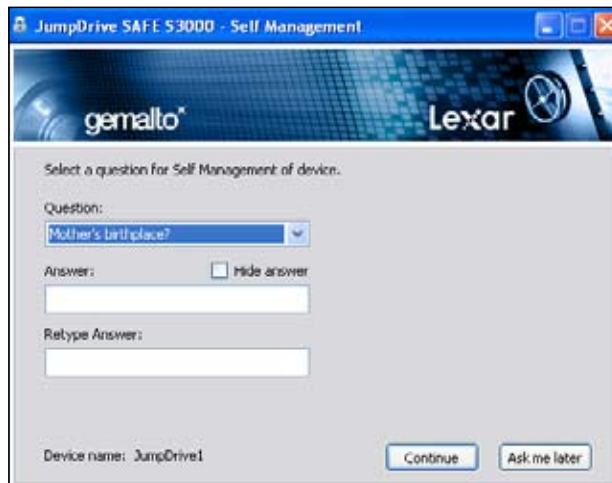
---

**Caution:** If you have chosen **Ask me later**, and lose your passphrase, you can reset the passphrase but you will lose all the data that is stored on the JumpDrive.

---

- Click **Continue**. By choosing this option, you will need to select a security question and enter an answer. The security question and answer are used to help you recover from a lost password situation. The window shown in “Figure 10” appears.

**Figure 10 - Select Security Question Window**



- a) Under **Question**, select a security question from the list, and enter your answer to the question under **Answer** and again under **Retype Answer** (do not copy and paste your answer).

---

**Note:**

1. The **registered Answer** is not case-sensitive. However, the comparison between **Answer** and **Retype Answer** during setup is case-sensitive, so the two fields must match exactly.
  2. If you want your answer to appear as masked characters instead of clear text, check the box **Hide answer**.
- 

- b) Click **Continue** to save your security question and answer, the window shown in "Figure 11" appears. Alternatively click **Ask Me Later**, to cancel the process.

**Figure 11 - Self Management Completed Window**



- c) Click OK to close the **Self Management** window.

---

**Caution:** After you have completed the initial setup, remove your JumpDrive securely (as described in "How to Safely Unplug the JumpDrive SAFE S3000 FIPS from Your PC" on page 11) and reinsert before use.




---

## Logging On to your JumpDrive SAFE S3000 FIPS

At subsequent sessions, after inserting the JumpDrive to the USB port of your computer:

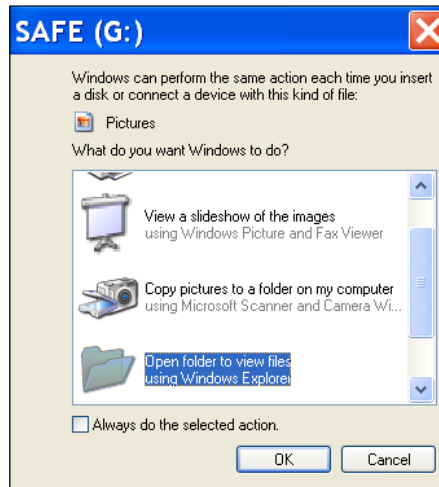
1. The **Enter Passphrase** window appears, as shown in Figure "Figure 7" on page 7.
2. Under **Passphrase**, enter the passphrase and click **Continue**.

This unlocks the secure storage area with the following results:

- a) In the systray, the "locked" icon changes to the "unlocked" icon .
- b) The name of the secure storage area changes from  **Removable Disk (G:)** to  **SAFE (G:)**.

c) Windows may ask you if you want to view the files in Explorer, as shown in "Figure 12".

**Figure 12 - Viewing Files in Explorer**



Click **OK** if you want to view the files.

---

**Caution:** Remember to always remove your JumpDrive securely, at the end of use, as described in "How to Safely Unplug the JumpDrive SAFE S3000 FIPS from Your PC" on page 11.

---

If you have yet to set the security question and answer, the window shown in "Figure 9" on page 8 appears. The window will appear each time your JumpDrive is inserted until your security question and answer has been set.

## Using Your JumpDrive

This chapter describes how to perform the most common administrator and user tasks with your JumpDrive SAFE S3000 FIPS.

### How to Safely Unplug the JumpDrive SAFE S3000 FIPS from Your PC

1. Right click the icon (which may be "locked" or "unlocked") in the system tray and choose **Safely Remove Device** from the contextual menu.
2. Unplug the JumpDrive only when you see the message shown in "Figure 13"

**Figure 13 - Safe to Remove Device Window**



---

**Note:** For Microsoft Vista, this feature is available with SP1 and later service packs.

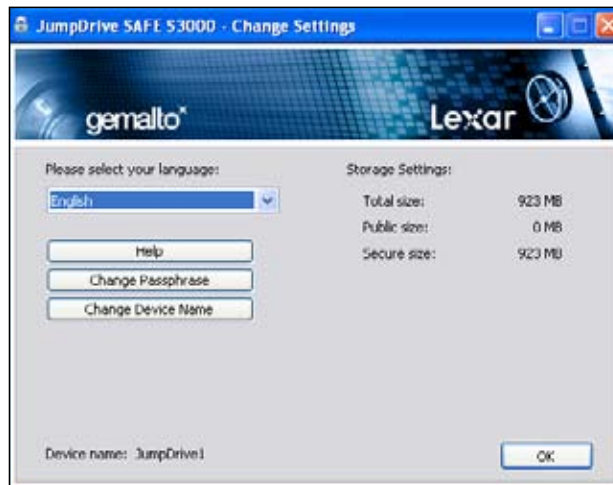
---

## How to Change a Passphrase

1. The JumpDrive must be unlocked before the passphrase can be changed.
2. Right click the icon in the system tray (which may be “locked” or “unlocked”) and choose **Change Settings** from the contextual menu.

The **Change Settings** window opens, as shown in “Figure 14”.

Figure 14 - Change Settings Window



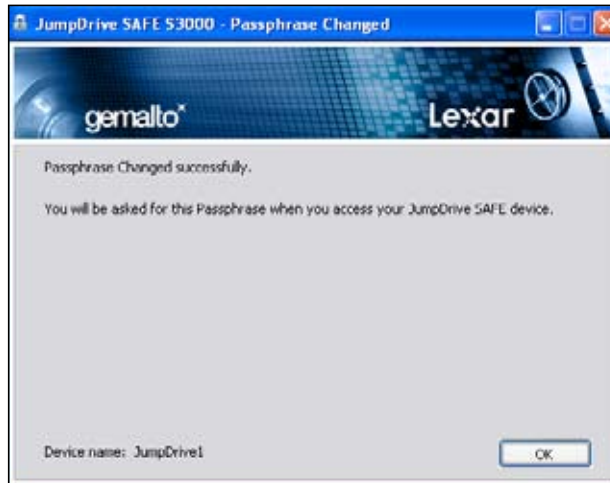
3. Click **Change Passphrase**. This **Change Passphrase** window, as shown in “Figure 15” appears.

Figure 15 - Change Passphrase Window



4. Under **Old Passphrase**, enter your current passphrase.  
Under **New Passphrase** and **Confirm New Passphrase**, enter a new passphrase.  
Click **Continue**. The window shown in “Figure 16” appears.

Figure 16 - Passphrase Changed Window



5. Click **OK**.

## How to Unblock your JumpDrive

Your JumpDrive will be blocked if you have exceeded five login attempts. Should this happen, there are two ways to unblock your JumpDrive:

### Security Question Set

1. If you had set up a security question and answer, the **Unblock Device** window as shown in "Figure 17" appears when login attempts have been exceeded.

Figure 17 - Unblock Device Window



2. Under **Answer**, enter the answer to the security question.
3. Under **New Passphrase** and **Confirm New Passphrase**, enter the new passphrase.
4. Click **Continue**. The **Passphrase Created** window appears, as shown in "Figure 6" on page 6.
5. In the **Passphrase Created** window, click **Continue**. The Enter Passphrase window displays, as shown in Figure "Figure 7" on page 7.
6. Enter the passphrase and click **Continue**.

## Security Question Not Set

1. If you have not setup the security question and answer, the **Device Reset** window as shown in Figure 18 appears after login attempts have been exceeded.

Figure 18 - Device Reset Window (Question Not Yet Chosen)



2. Under **Passphrase** and **Confirm Passphrase**, enter the new passphrase.
3. Click **Continue**. The message shown in "Figure 19" appears:

Figure 19 - Reinsert Device Window



4. Click **OK**, remove the JumpDrive and reinsert it for the new passphrase to take effect.


---

**Note:** As a security measure, all the data in your JumpDrive is deleted. Therefore, it is strongly recommended that you choose a device management method when prompted.


---

5. After you have reinserted the JumpDrive, the **Enter Passphrase** window appears. Enter the passphrase and click **Continue**.
6. The **Self Management** window appears, as shown in "Figure 9 - Self Management Window" on page 8 for the setup of the security question and answer.

## How to Change Your Device Name


1. Right click the padlock icon  in the system tray and choose **Change Settings** from the contextual menu. The **Change Settings** window opens, as shown in “Figure 14” on page 12.
2. Click **Change Device Name**. The **Name Device** window as shown in “Figure 4” on page 5 appears.
3. Enter a new name for your JumpDrive, and click **Continue**.

## How to Change Your Display Language

1. Right click the padlock icon  in the system tray and choose **Change Settings** from the contextual menu. The **Change Settings** window opens, as shown in “Figure 14” on page 12.
2. Select another language from the list, then click **OK**.

## How to Lock/Unlock your JumpDrive

### To unlock the JumpDrive:




1. Right click the “locked” icon  in the system tray and choose **Unlock Device Name** from the contextual menu.

Where **Device Name** is the name you gave your JumpDrive.


The **Enter Passphrase** window appears:



Figure 20 - Enter Passphrase Window



2. Enter the passphrase and click **Continue**. The SAFE drive unlocks and the “locked” icon  in the system tray automatically changes to the “unlocked” icon . In Windows Explorer, the unlocked drive changes to  SAFE (G:).

## To lock the JumpDrive:


1. Right-click the “unlocked” icon  in the system tray and choose **Lock Device Name** from the contextual menu.

The “unlocked” icon  in the system tray automatically changes to the “locked” icon . The SAFE drive can no longer be accessed and appears as in Windows Explorer.

## How to Find a Serial Number

Your JumpDrive SAFE has a device and smart card serial number. You can find them by displaying the “About” information.

## To display the “About” information:

1. Right click the icon  in the system tray (which may be “locked” or “unlocked”) and choose **About JumpDrive SAFE** from the contextual menu.

This action displays the “About” window, as shown in “Figure 21”.


Figure 21 - The “About” Window



## How to Display the End User License

The End User License describes the terms and conditions for using JumpDrive SAFE S3000 FIPS.

To display the End User License:

1. Right click the icon  in the system tray and choose About JumpDrive SAFE from the contextual menu.
2. In the **About** window, click **JumpDrive SAFE S3000 End User License**.

The End User License Agreement opens as a .pdf file.

# Specifications

## Capacity:

- 2GB\*\*, 4GB\*\*, 8GB\*\*

## Read/Write Performance\*\*:

- Up to 30MB/s Read\* and 22MB/s Write\*

## Dimensions:

- 75mm x 25mm x 14mm

## Weight:

- 48grams

## Security Standard:

- FIPS 140-2 Level 3 validated
- Waterproof MIL-STD-810F

## Data Encryption:

- Gemalto .NET smart card
- Onboard AES hardware encryption
- 256-bit encryption key
- Chain Block Cipher (CBC) mode

## Power Indicator:

- LED one color (blue)

## Temperature Range:

- Operating temperature: 0° to 60°C (32° F to 140° F)
- Storage temperature: -20°C to 85°C (-4° F to 185° F)

## Vibration:

- 147 m/s<sup>2</sup> peak amplitude
- 10 to 2,000 Hz, 20 min. sweep, 12 cycles per axis, 36 cycles for 3 axes.

## Shock:

- Acceleration = 490 m/s<sup>2</sup> (50G)
- Semi-sine wave, velocity change = 3.44 m/s (11.3ft/s)

## System Requirements:

- Microsoft® Windows® 2000 SP4 or higher
- Microsoft Windows XP SP2
- Microsoft Windows Vista®
- Microsoft Windows 2003, 2008 Server
- Mac OS® X 10.3.9 or higher (Intel-based Macs only)
- One available USB port

## Standards and Certifications:

- USB 2.0 high speed
- RoHS
- WEE
- CE
- FCC

\*Speeds based on internal testing. Actual performance may vary.

\*\*Actual usable memory capacity may vary. 1GB equals 1 billion bytes.

## Contact Information

### If you've got questions, we are here to help

Please send us your questions to:  
**enterprise@lexar.com**

### Getting more information

You can find more information online on our websites:

### Product Information:

**www.lexar.com/enterprise**

### Customer Support & Warranty Information:

**www.lexar.com/support**

### Lexar Media, Inc.

47300 Bayside Parkway

Fremont, CA 94538

Tel: (510) 413-1275

Email: enterprise@lexar.com

URL: www.lexar.com

7am to 5pm PST, Monday through Friday

This document is for information use only and is subject to change without prior notice. Lexar Media assumes no responsibility for any errors that may appear in this document, nor for any incidental or consequential damages resulting from the furnishing, performance or use of this material. This document shall not be posted on any network computer or broadcast in any media and no modification of any part of this document shall be made without prior written consent of Lexar Media.

Security safeguards, by their nature, may possibly be circumvented. Lexar does not guarantee the product will be 100% resistant to all possible attacks. Lexar cannot, and does not, guarantee that data will not be accessed by unauthorized persons, and Lexar disclaims any warranties to that effect to the fullest extent permitted by law. Lexar may make changes to specifications and product descriptions at any time, without notice.

©2009 Lexar Media, Inc. All rights reserved. Information is subject to change without notice. Lexar, the Lexar logo, and JumpDrive are trademarks of Lexar Media, Inc. Microsoft, Windows, the Windows logo and Windows Vista are either registered trademarks or trademarks of Microsoft Corporation in the United States and/or other countries. The Mac logo and Mac OS are registered trademarks of Apple Inc. All other trademarks or registered trademarks are the property of their respective owners. Lexar Media, Inc. is a subsidiary of Micron Technology, Inc.